



# **SPRING SUMMER 2027 PRODUCT COLLECTION**



**GARMONT®**



Download the English version  
of this catalogue



Scarica il catalogo  
in lingua italiana



Laden Sie die deutsche Fassung  
des Katalogs herunter



Téléchargez le catalogue  
en langue française

# INDEX

## 9.81 COLLECTION

### SPEED APPROACH

- 9.81 ONYX MID GTX®	_14
- 9.81 ONYX GTX®	_15
- 9.81 ONYX MB GTX®	_16
- 9.81 ONYX	_18

### SPEED HYBRID

- 9.81 META GTX®	_20
- 9.81 META	_22

### SPEED HIKING

- 9.81 ETERE MAX GTX®	_24
- 9.81 ETERE 2	_26

## TRADIZIONE COLLECTION

### MOUNTAINEERING

- TOWER 4 EXTREME GTX®	_30
- TOWER 3.0 GTX®	_32
- PINNACLE EVO GTX®	_33
- ASCENT EVO GTX®	_34

### TREKKING

- PINNACLE TREK GTX®	_35
- HEXAGON GTX®	_36
- NEBRASKA 3 GTX®	_37
- LAGORAI 3 GTX®	_38

### APPROACH

- VETTA EVO GTX®	_39
- DRAGONTAIL MNT 3 GTX®	_40
- DRAGONTAIL LT EVO	_42

### HIKING

- AKRON MID GTX®	_44
- AKRON GTX®	_45
- ORON MID WP	_46
- ORON WP	_47
- ORON	_48

### LIGHT HIKING

- NEXUS MID GTX®	_49
- NEXUS GTX®	_50
- NEXUS	_51
- PULSE 2 WP	_52
- PULSE 2	_54

### KIDS

- KIDS PULSE MID WP	_56
- KIDS PULSE WP	_58
- KIDS PULSE	_59

GARMONT® developed the a.d.d.® (Anatomically Directed Design) technology from an in-depth study of the foot.

The foot is a complex anatomical structure designed to support the body's weight, absorb impact and provide stability and mobility during movement.

With its combination of bones, muscles, tendons and ligaments, the foot plays an essential role in locomotion and balance.

Proper biomechanical function is essential to prevent injuries and improve performance, especially in outdoor and sports activities. Shoes designed with anatomical and technological features can enhance stability, comfort and more efficient movement, reducing fatigue and the risk of injury.

This innovative approach integrates five design elements that, depending on the model, work in synergy to offer stability, comfort and technicity.



#### 1) ANATOMICAL TONGUE

The tongue matches the asymmetric shape of the top of your foot and ankle. It is thicker to the outside and progressively thinner toward the inside. This anatomic shape keeps the tongue in place resulting in better control, stability and comfort.



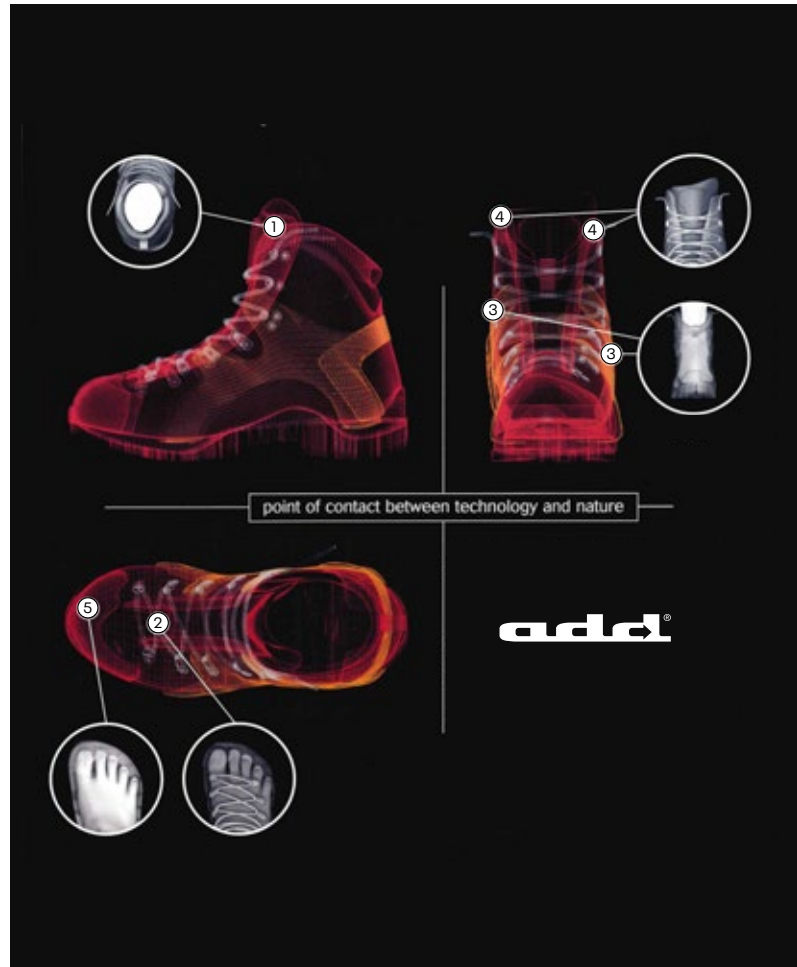
#### 2) PRECISION LACING

The shoe flexes like your foot for out-of-the-box walking comfort.



#### 4) ASYMMETRICAL CUFF

The ankle cuff is lower on the outside and taller on the inside for better edging, greater overall stability and comfort when traversing and scrambling.



≡ Technicity

□ Stability

○ Comfort



#### 3) DIFFERENTIAL ANKLE PADS

Securely locks the heel in place for a precise fit around the ankle bones for better stability and support.



#### 5) ROOMY TOE BOX

Features a straighter shape to accommodate the natural position of the big toe. With this design your toes can provide better balance and propulsion.

# COMFORT AND PERFORMANCE FOR WOMEN

The development of GARMONT® footwear has a clear objective: to offer maximum comfort and the best possible performance. For this reason, we have created a specific fit for women, adapting the last and the lasting board to suit the different needs of each model.

## EMF ERGONOMIC WOMEN'S FIT

The male and female foot have specific anatomical and biomechanical differences. Generally, the female foot is smaller, with a slimmer structure and more tapered toes.

The sole is often narrower and the arch of the foot more pronounced.

In addition, the muscles of the female foot are less dense, while the joints are more flexible.

Women also tend to walk with a shorter stride, distributing their weight more on the front part of the foot.

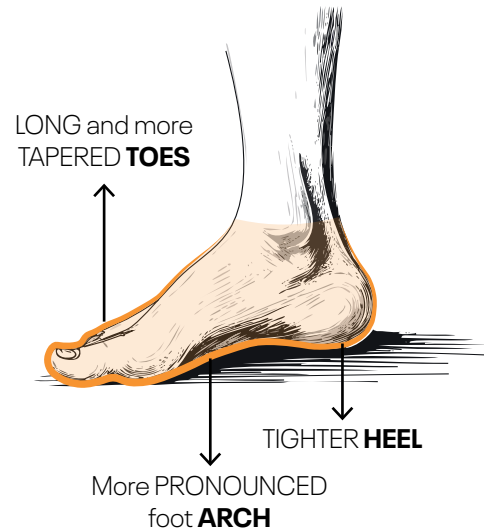
Aware of these peculiarities, we have set up a dedicated research area to ensure that our footwear best meets the needs of every foot.

### LASTING BOARD



LESS STIFF than MEN'S **insole board**

### DEDICATED WOMEN'S LAST





GARMONT® partners with Vibram® to offer the best technologies in terms of grip, traction and durability. Through this collaboration, GARMONT® footwear features outsoles with advanced compounds such as Mont, Megagrip, XS Trek EVO and Durastep.

Innovative technologies such as Vibram® Traction Lug enhance traction across all types of terrain, while Vibram® Litebase reduces sole weight by 30% thanks to a 50% reduction in thickness without compromising performance.



### REBOOT YOUR BOOTS

Worn-out soles on select Garmont boots can be replaced through over three hundred authorized Vibram cobblers across Europe to give the boots a second life.



### GARMONT TRACTION FORMULA

GTF – Garmont Traction Formula is a proprietary family of outsoles designed with compounds and tread patterns tailored to specific outdoor activities. From long distance treks to versatile day hikes or fast-paced approaches, every outsole is engineered to deliver the optimal balance of grip, durability and stability.

Each outsole design is carefully studied to provide confidence and control on its intended terrain, ensuring that every adventure is met with the performance and reliability it demands.



The long-standing collaboration between GARMONT® and JV International, who design, develop and produce Soles by Michelin®, has led to the design of high-performance customised soles that deliver exceptional grip, sustainability and lightness for all activities.

These high performance soles provide excellent traction, lightness and flexibility.

The strategic lug pattern enhances grip and stability on various surfaces while siping improves adherence by adapting to terrain irregularities. Optimised lug distribution reduces weight, maintains flexibility and maximises traction.

## ergoLAST

The contours of this anatomical last are smooth and rounded, to more closely follow the shape of the human foot. Footwear built on this last wrap the foot better, especially the heel and bottom of the foot, for a more comfortable, ergonomic fit.



## GARMONT



The GARMONT® Heel Lock system provides a secure, locked-in fit, keeping your foot firmly in place to prevent unwanted movement. By eliminating heel slippage, it minimizes friction, reducing the risk of blisters and enhancing overall comfort. This innovative design ensures better stability and support, allowing you to focus on your adventure without discomfort or distractions.

## G-WRAP

G-Wrap technology is integrated between the upper and lining in the forefoot area and functions through the lacing system. Tightening the laces applies tension on the G-Wrap structure, which will tend to wrap around the foot giving an immediate feeling of stability and security.



## G-DRY

The G-DRY membrane guarantees a windproof barrier with up to 10.000mm waterproof protection.

## SHEELTECH

This TPU heel cup securely wraps the rearfoot to enhance stability without restricting natural movement, ensuring a secure yet comfortable fit.





The BOA® Fit System delivers a micro-adjustable, precision fit engineered to perform in the toughest conditions.

**INSTEP  
LOOK**

A flap system that can be adjusted through the BOA® Fit System to dynamically adapt the tension on the front of the foot and keep the foot stable at every stage of the ascent.



GARMONT® uses a range of GORE-TEX® waterproof membrane options according to the required level of protection: Insulated, More Seasons and Most Breathable. Garmont footwear with GORE-TEX® features the new-generation ePE (expanded polyethylene) membrane, which maintains waterproof, windproof, breathable and durable performance while reducing environmental impact. Lightweight, thin and strong, it is laminated to selected fabrics to provide a PFAS-free solution with a lower carbon footprint.

From SS27, GARMONT® introduces GORE-TEX® Invisible Fit technology, where the membrane is directly bonded to the upper with no visible layers. This removes gaps between materials, reducing water absorption and drying times while preserving a natural fit similar to non-waterproof footwear. The result is a lighter construction with less wrinkling, fewer pressure points and enhanced overall comfort even over long distances.



**arneplant®**



Arneplant® footbeds offer superior comfort and cushioning. Utilising Arneflex™ technology with open-cell PU foam, they ensure breathability, moisture absorption and lightness. Antibacterial components eliminate heat and odor.



## Ortholite®

Ortholite® designs and produces custom footbed solutions that deliver unrivaled comfort and performance.

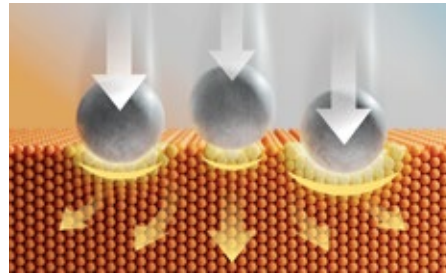
## D3O® Protected

D3O® is the world's leading protection company. It produces an extremely innovative orange material that keeps you and your things safe from harm caused by impact, vibration and fatigue.

This revolutionary material is characterized by its exceptional softness and flexibility. Its unique structure allows it to effectively absorb and dissipate impact energy, then return perfectly to its original shape.

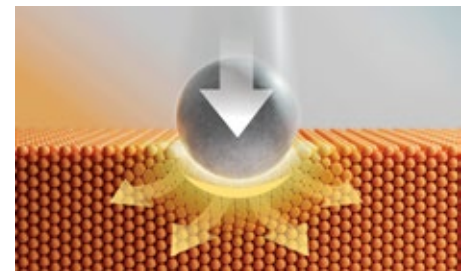
This characteristic makes it ideal for applications requiring superior protection and comfort.

GARMONT® is one of the first to apply this material to outdoor footwear. Some models use this material in the footbed to provide superior protection for the foot. Its advanced cushioning mechanism guarantees an increased level of comfort. Other models use D3O® material in the ankle area for added protection in the event of external impacts.



**Shock Absorption**

Non-sacrificial smart material stiffens to absorb shock, minimize fatigue and increase comfort.



**Impact Protection**

Non-sacrificial smart material stiffens to dissipate high impact energies and mitigate injury/damage.

## SUSTAINABILITY

At GARMONT®, we have undertaken a structured journey to embed sustainability into our product development processes through a pilot project focused on Life Cycle Assessment (LCA) and ecodesign. This approach allows us to measure environmental impacts across the entire product life cycle, identify key hotspots, and steer design decisions toward lower impact solutions from the earliest development stages.

In parallel, we are shaping a Corporate Social Responsibility (CSR) strategy aimed at delivering tangible improvements in both our environmental performance and social impact. This includes setting clear objectives, defining monitoring indicators, and rolling out concrete actions throughout the value chain, from material selection and production process optimization to responsible collaboration with our partners.

Together, these initiatives form a structured and progressive pathway, driven by data, clear targets, and measurable actions, that will support the continuous improvement of our overall impact over time.

## GARMONT: EVOLVING TRADITION

We are the sum of our experiences and those of our predecessors. As we look to the future, we draw strength from our past, transforming heritage into innovation. Today, GARMONT® continues to evolve with solid roots grounded in over 60 years of experience, while embracing a world in constant transformation.

This evolution has given rise to two lines: Tradizione and 9.81, a perfect synthesis of legacy and progress. Both share the same vision and DNA but are distinct in form and function. On the one hand, Tradizione embodies timeless design and highly technical lasts, with products designed for lovers of classic mountain pursuits; on the other, 9.81 features products with a modern, dynamic design and a running-inspired fit, ideal for those who seek lightness, agility and versatility. Together, they represent another step forward to meet the needs of a growing and diverse public, embracing change and growing with it.

**As GARMONT® evolves, so does our vision of movement.**





**LEATHER SKI BOOT**

**1960**

In 1964 the GARMONT brand is established in the sports district of Montebelluna. The name reflects its roots: 'GAR' comes from the surname of the founder, Garbuio, and 'MONT' from Montebelluna, the heart of the sports footwear tradition.

**1970**

GARMONT establishes itself as a leading brand in the world of ski mountaineering, winning over fans and professionals alike.



**GARMONT G-RIDE**

**1990**

The company expands its offering by introducing mountaineering footwear and launching an international expansion strategy.



**DRAGONTAIL**

Some of GARMONT's most iconic models are introduced, including DRAGONTAIL and 9.81.

**2000**



**9.81 RACER**

GARMONT chooses to focus its know-how on the growth of the Outdoor line, exiting the ski boot market to strengthen its positioning in key segments.

**2010**



**TOWER EXTREME LX GTX®**

In a post-pandemic world, GARMONT consolidates its presence on the outdoor market and embarks on a journey towards greater sustainability, measuring its impact and developing more eco-friendly products.

**2020**



**9.81 ONYX GTX®**

With the launch of the new Tradizione and 9.81 lines, the outdoor collection expands to meet evolving market demands and adapt to a changing world.

**2026**

## 9.81: MOUNTAIN IN MOTION

The outdoor world is evolving. Where mountains were once explored with traditional tools and a slower pace, the rise of disciplines such as trail running have transformed the way we experience nature. Speed, dynamism, and performance go hand in hand with the traditional hiking experience, opening new perspectives on movement, exploration, and challenge.

This shift marks a new relationship with the natural environment, one defined not only by destination, but by motion itself.

This evolution gave birth to the 9.81 collection, designed for a modern way of moving through the mountains. Here, exploration gives way to athletic drive, pure movement, and the personal ambition to push beyond limits.



Lightness, responsiveness, and technology form the foundation of a line created for those who experience nature with energy, intent, and determination.

The collection takes its name from a universal constant:  $9.81 \text{ m/s}^2$ , the acceleration due to gravity. Invisible yet omnipresent, gravity is the force that anchors us to the ground while enabling every movement we make. Without it, there would be no traction underfoot, no resistance to push against, no propulsion forward.

Gravity is more than a physical law; it is the silent partner in every stride, jump, and ascent. As we cross rugged trails, climb vertical terrain, or push the boundaries of our own endurance, gravity becomes both anchor and ally, shaping how we move and experience the world around us.

This essence of motion is the soul of the 9.81 line, inspiring athletes, adventurers and explorers to embrace the force that both grounds us and propels us forward.

# 9.81 IS THE SPEED OF THE EARTH'S EMBRACE



Gravity accelerates us toward the ground at 9.81 meters per second squared. In that acceleration lies transformation. Gravity is not just a force; it's a filter. As it accelerates us toward Earth, it sharpens perception and brings clarity.

What begins in the cold greys and deep blues of outer space transforms into the rich, vibrant color palette of a living planet. As gravity takes hold, Earth's colors come to life. Color intensifies. Detail emerges. Reality comes into focus.

The 9.81 color journey follows this spectrum shaped by gravitational acceleration, from space to Earth, from abstraction to reality, from stillness to action.

**This is the 9.81 story told through motion and color.**

## 9.81 COLLECTION

### Speed Approach



9.81 ONYX MID GTX®



9.81 ONYX GTX®



9.81 ONYX MB GTX®



9.81 ONYX **NEW**

### Speed Hybrid



9.81 META GTX® **NEW**



9.81 META **NEW**

### Speed Hiking



9.81 ETERE MAX GTX®



9.81 ETERE 2 **NEW**

SPEED,  
LIGHTNESS,  
INNOVATION

# 9.81 ONYX MID GTX®

Designed for fast approach, this shoe offers light support, solid grip, and ankle protection for fast, controlled transitions on demanding terrain.

**ACTIVITY:**



SPEED APPROACH



HIKING

**COLORS:**



**CODE:**

raven black/pale beige  
S15001\_M057339  
003088  
size range: 6-13 UK

**FIT:**



PRECISE

REGULAR

WIDE

nights blue/plein blue  
S15001\_M649650  
003089  
size range: 6-13 UK



nights blue/lunar grey  
S15001\_W649049  
003090  
size range: 3-8,5 UK



agate grey/hedge green  
S15001\_W058847  
003091  
size range: 3-8,5 UK



HEEL LOCK SYSTEM: helps prevent heel slip and blisters



a.d.d.® : Precision lacing - Anatomical tongue - Asymmetrical cuff



Dual-Block Sole: From the midfoot to the toe, a rubber cage integrates the rand and the outsole for a single, protective structure.

**TECH SPECS**

<b>UPPER</b>	Polyester with high-tenacity polyamide yarn + 100% recycled polyester
<b>LINING</b>	PFC-free Gore-Tex® Most Breathable (ePE)
<b>FOOTBED</b>	Thermoformed Garmont PU foam
<b>MIDSOLE</b>	Monodensity EVA + ergonomic ESS
<b>OUTSOLE</b>	VIBRAM® with MEGAGRIP compound and TRACTION LUG technology
<b>WEIGHT</b>	475 gr (1/2 pair size 8 UK)

**TECHNOLOGIES:**



# 9.81 ONYX GTX®

Light, agile, and responsive, this approach shoe ensures fast transitions, secure grip, and dynamic support for outdoor explorers who move with speed and precision.

## ACTIVITY:



SPEED APPROACH



HIKING

## FIT:



PRECISE      REGULAR      WIDE

## CODE:

raven black/firecracker orange  
S15002\_M057439  
003092  
size range: 6-13 UK

## COLORS:



nights blue/agate grey  
S15002\_M649058  
003093  
size range: 6-13 UK



agate grey/firecracker orange  
S15002\_M058439  
003094  
size range: 6-13 UK



HEEL LOCK SYSTEM: helps prevent heel slip and blisters



a.d.d.® : Precision lacing - Anatomical tongue



Dual-Block Sole: From the midfoot to the toe, a rubber cage integrates the rand and the outsole for a single, protective structure.



gray blue/very violet  
S15002\_W667916  
003207  
size range: 3-8,5 UK

**NEW**

TECH SPECS	
UPPER	Polyester with high-tenacity polyamide yarn + 100% recycled polyester
LINING	PFC-free Gore-Tex® Most Breathable (ePE)
FOOTBED	Thermoformed Garmont PU foam
MIDSOLE	Monodensity EVA + ergonomic ESS
OUTSOLE	VIBRAM® with MEGAGRIP compound and TRACTION LUG technology
WEIGHT	440 gr (1/2 pair size 8 UK)



agate grey/hedge green  
S15002\_W058847  
003096  
size range: 3-8,5 UK

## TECHNOLOGIES:



# 9.81 ONYX MB GTX®

An ideal shoe for fast approach, built for the alpine charger who navigates technical terrain with speed, power and precision.

**ACTIVITY:**



SPEED APPROACH



HIKING

**COLORS:**



iron blue/navy blue  
S15005\_M657658  
003142  
size range: 6-13 UK



ombre blue/stone blue  
S15005\_W661662  
003144  
size range: 3-8,5 UK



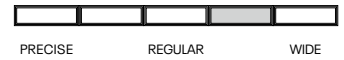
balsam green/navy blue  
S15005\_W852658  
003145  
size range: 3-8,5 UK

**CODE:**

kelp green/beluga black  
S15005\_M851066  
003143  
size range: 6-13 UK



**FIT:**



HEEL LOCK SYSTEM: helps prevent heel slip and blisters



a.d.d.® : Precision lacing - Anatomical tongue



Dual-Block Sole: from the midfoot to the toe, a rubber cage integrates the rand and the outsole for a single, protective structure.

**TECH SPECS**

<b>UPPER</b>	1.4 mm microbuck + technical ripstop
<b>LINING</b>	PFC-free Gore-Tex® Most Breathable (ePE)
<b>FOOTBED</b>	Thermoformed Garmont PU foam
<b>MIDSOLE</b>	Monodensity EVA + ergonomic ESS
<b>OUTSOLE</b>	VIBRAM® with MEGAGRIP compound and TRACTION LUG technology
<b>WEIGHT</b>	450 gr (1/2 pair size 8 UK)

**TECHNOLOGIES:**





# 9.81 ONYX

Breathable, agile, and responsive, this approach shoe ensures fast transitions, secure grip, and dynamic support for outdoor explorers who move with speed and precision.

**ACTIVITY:**



SPEED APPROACH



HIKING

**COLORS:**



dusky green/dove grey  
S15006\_M854034  
003187  
size range: 6-13 UK

**NEW**



sweet violet/majolica blue  
S15006\_W920665  
003189  
size range: 3-8,5 UK

**NEW**

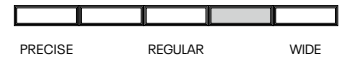
**CODE:**

iron grey/vibrant orange  
S15006\_M017442  
003186  
size range: 6-13 UK

**NEW**



**FIT:**



HEEL LOCK SYSTEM: helps prevent heel slip and blisters



a.d.d.<sup>®</sup>: Precision lacing



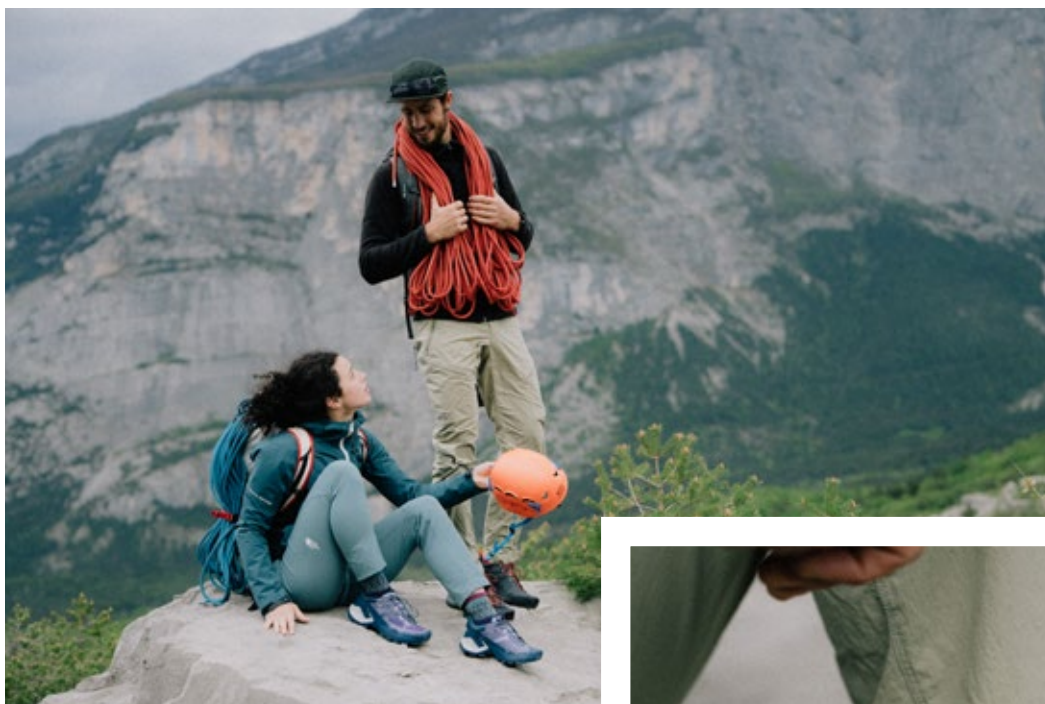
Dual-Block Sole: from the midfoot to the toe, a rubber cage integrates the rand and the outsole for a single, protective structure.

**TECH SPECS**

<b>UPPER</b>	Semi-transparent polyester + 100% recycled polyester
<b>LINING</b>	Mesh
<b>FOOTBED</b>	Thermoformed Garmont PU foam
<b>MIDSOLE</b>	Monodensity EVA + ergonomic ESS
<b>OUTSOLE</b>	VIBRAM <sup>®</sup> with MEGAGRIP compound and TRACTION LUG technology
<b>WEIGHT</b>	425 gr (1/2 pair size 8 UK)

**TECHNOLOGIES:**





9.81

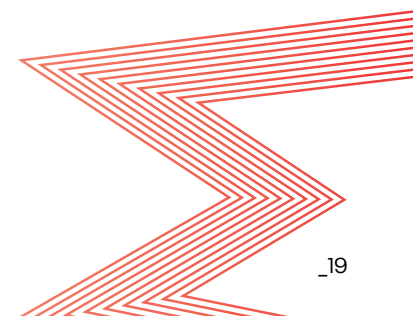


9.81

COMFORT WITH PRECISION

BREATHABILITY

FAST TRANSITION



# 9.81 META GTX®

For agile adventurers, this multifunction weatherproof shoe merges approach-inspired forefoot precision with a responsive, accentuated rear area for dynamic movement. Ideal for approach, fast hiking and technical hikes in variable weather.

## COLORS:



sea grey/cub brown  
S15008\_W072073  
003214  
size range: 3-8,5 UK

**NEW**

## CODE:

sea grey/cub brown  
S15008\_M072344  
003213  
size range: 6-12,5 UK

**NEW**

## ACTIVITY:



SPEED APPROACH



SPEED HIKING

## FIT:



PRECISE

REGULAR

WIDE



Abrasion-resistant full overlasting wraps the midsole, fusing the upper and outsole package for maximum precision and control



a.d.d.®: Precision lacing - differential ankle pads



Sheeltech TPU heel cup wraps the rearfoot, providing excellent stability while maintaining natural movement and comfort

## TECH SPECS

<b>UPPER</b>	Double-thread knit + abrasion-resistant recycled polyester
<b>LINING</b>	PFC-free Gore-Tex® with Invisible fit technology (ePE)
<b>FOOTBED</b>	Garmont PU foam
<b>MIDSOLE</b>	Monodensity EVA + ergonomic ESS
<b>OUTSOLE</b>	VIBRAM® with MEGAGRIP compound
<b>WEIGHT</b>	465 gr (1/2 pair size 8 UK)

## TECHNOLOGIES:



add



SHEELTECH

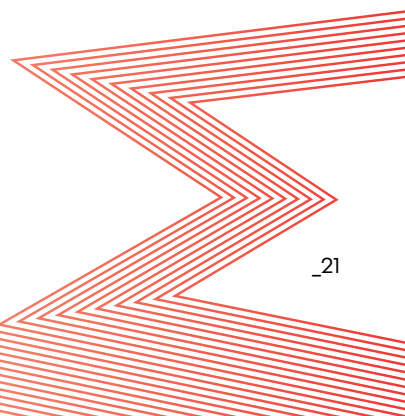


18.



9.

MULTI-TERRAIN  
QUICK DRY AND TRUE FIT  
BOLD IDENTITY



# 9.81 META

For agile adventurers, this multifunction breathable shoe merges approach-inspired forefoot precision with a responsive, accentuated rear area for dynamic movement. Ideal for approach, fast hiking and technical hikes.

## COLORS:



sea grey/spectra green  
S15009\_M072857  
003215  
size range: 6-12,5 UK

**NEW**



wind grey/mock orange  
S15009\_W075424  
003218  
size range: 3-8,5 UK

**NEW**



grisaille blue/sea grey  
S15009\_W670072  
003217  
size range: 3-8,5 UK

**NEW**

## CODE:

quiet gray/tango red  
S15009\_M074422  
003216  
size range: 6-12,5 UK

**NEW**



## ACTIVITY:



SPEED APPROACH



SPEED HIKING

## FIT:



PRECISE

REGULAR

WIDE



Abrasion-resistant full overlasting wraps the midsole, fusing the upper and outsole package for maximum precision and control



a.d.d.®: Precision lacing - differential ankle pads



Sheeltech TPU heel cup wraps the rearfoot, providing excellent stability while maintaining natural movement and comfort

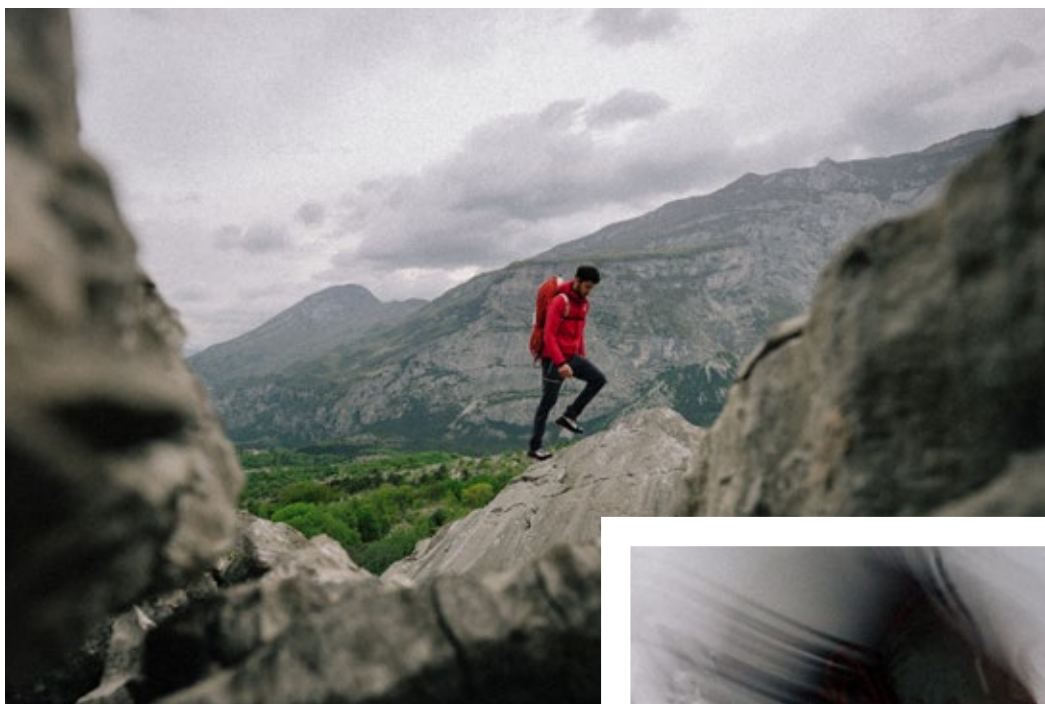
## TECH SPECS

<b>UPPER</b>	Double-thread knit + abrasion-resistant recycled polyester
<b>LINING</b>	Lycra
<b>FOOTBED</b>	Garmont PU foam
<b>MIDSOLE</b>	Monodensity EVA + ergonomic ESS
<b>OUTSOLE</b>	VIBRAM® with MEGAGRIP compound
<b>WEIGHT</b>	450 gr (1/2 pair size 8 UK)

## TECHNOLOGIES:

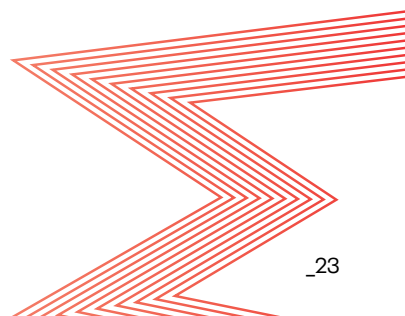
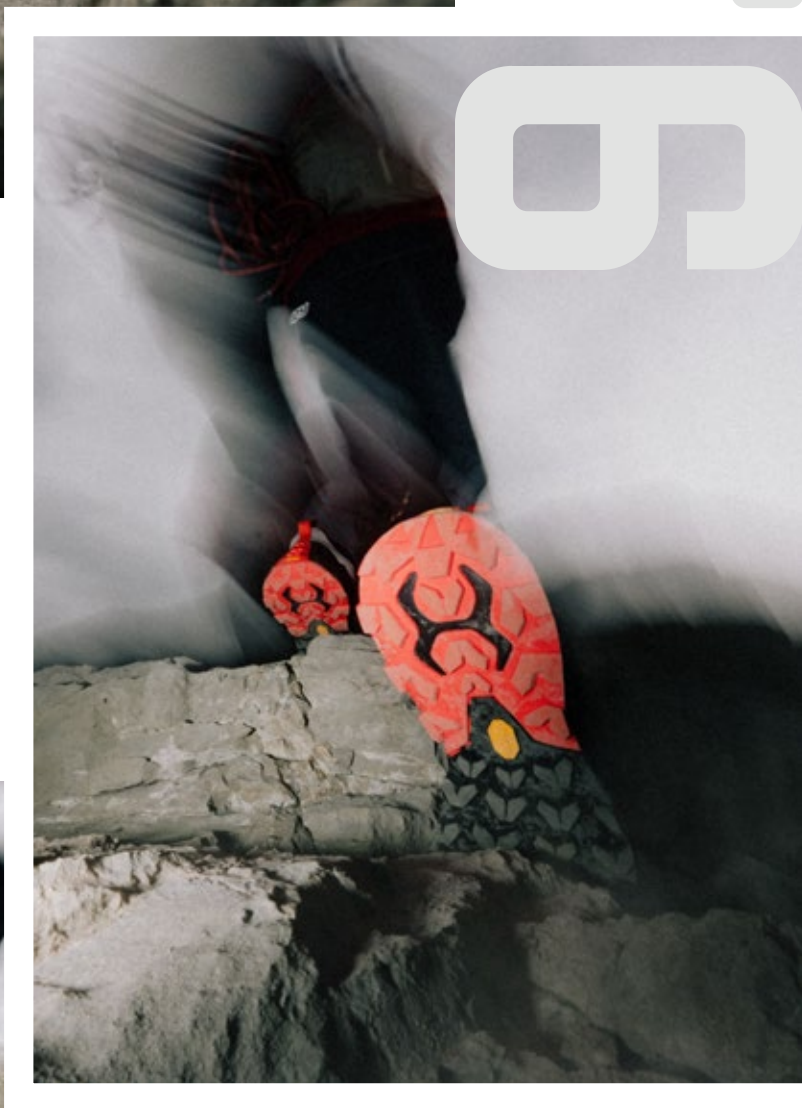


SHEELTECH



9.81

MULTI-TERRAIN  
SOCK-LIKE FIT  
BOLD IDENTITY



# 9.81 ETERE MAX GTX®

Ensuring fluid motion and confident grip, this shoe delivers comfort with precision. Perfect for agile hikers navigating technical mountain terrain with ease.

**ACTIVITY:**



SPEED HIKING



HIKING

**COLORS:**

**CODE:**

ridge grey/birch white  
S15004\_M062063  
003139  
size range: 6-13 UK

**FIT:**



PRECISE

REGULAR

WIDE



gunmental grey/iron blue  
S15004\_M012657  
003137  
size range: 6-13 UK



jadeite green/navy blue  
S15004\_W850658  
003140  
size range: 3-8,5 UK



infinity blue/ensign blue  
S15004\_W659660  
003141  
size range: 3-8,5 UK



HEEL LOCK SYSTEM: helps prevent heel slip and blisters



a.d.d.®: Precision lacing- anatomical tongue



Aggressive Outsole Design: Deep-grip lugs, reinforced tread blocks and bold traction lines that amplify control, durability and confidence

**TECH SPECS**

<b>UPPER</b>	Technical ripstop + welded microfiber reinforcements
<b>LINING</b>	PFC-free Gore-Tex® Most Breathable (ePE)
<b>FOOTBED</b>	Ortholite® Float™ with 5% recycled rubber
<b>MIDSOLE</b>	Monodensity light EVA + ergonomic ESS
<b>OUTSOLE</b>	VIBRAM® with MEGAGRIP compound and TRACTION LUG technology
<b>WEIGHT</b>	399 gr (1/2 pair size 8 UK)

**TECHNOLOGIES:**





# 9.81 ETERE 2

For agile hikers, this ultralight speed hiking shoe with a custom high-tenacity upper adapts seamlessly to every pace, delivering precise comfort and reliable grip for dynamic movement across varied terrain.

**ACTIVITY:**



SPEED HIKING



HIKING

**COLORS:**

**CODE:**

mineral green/corsair blue  
S15007\_M856668  
003210  
size range: 6-13 UK

**NEW**

**FIT:**



PRECISE

REGULAR

WIDE



tap black/vibrant orange  
S15007\_M070442  
003209  
size range: 6-13 UK

**NEW**



stones white/lavender violet  
S15007\_W071923  
003212  
size range: 3-8,5 UK

**NEW**



tap black/iron brown  
S15007\_W070316  
003211  
size range: 3-8,5 UK

**NEW**



HEEL LOCK SYSTEM: helps prevent heel slip and blisters



a.d.d.®: Precision lacing



TPU-threaded upper delivers reinforced structure and exclusive design

**TECH SPECS**

<b>UPPER</b>	Polyester + high tenacity TPU yarn
<b>LINING</b>	Mesh
<b>FOOTBED</b>	Ortholite® Float™ with 5% recycled rubber
<b>MIDSOLE</b>	Monodensity light EVA + ergonomic ESS
<b>OUTSOLE</b>	VIBRAM® with MEGAGRIP compound plus LITEBASE and TRACTION LUG technologies
<b>WEIGHT</b>	330 gr (1/2 pair size 8 UK)

**TECHNOLOGIES:**





9.81



9.81

COMFORT WITH PRECISION

LIGHTNESS

SET THE PACE



9.81

# TRADIZIONE: BORN OF THE MOUNTAINS

The TRADIZIONE line is where tradition meets innovation. Inspired by the rich legacy of mountaineering, this collection blends timeless design with modern performance. Every detail reflects our deep-rooted mountain heritage, elevated by cutting-edge materials and advanced technical solutions.

Defined by iconic features, clean silhouettes and a precise, snug fit, the TRADIZIONE collection is dedicated to those who live the mountains with passion and authenticity. Whether on a day hike, via ferrata, or multi-day treks, these products deliver comfort, reliability and the enduring beauty of classic design.

## Mountaineering



TOWER 4 EXTREME GTX® **NEW**



TOWER 3.0 GTX®



PINNACLE EVO GTX®



ASCENT EVO GTX®

## Trekking



PINNACLE TREK GTX®



HEXAGON GTX®



NEBRASKA 3 GTX®



LAGORAI 3 GTX®

## Approach



VETTA EVO GTX®



DRAGONTAIL MNT 3 GTX® **NEW**



DRAGONTAIL LT EVO

HERITAGE,  
DURABILITY,  
SURE-FOOTEDNESS

The TRADIZIONE color language is inspired by mountain heritage and elemental forces of nature, balancing tradition with modern performance.

Magma-inspired tones convey energy, confidence and strength, grounded by neutral shades for a timeless appeal. Warm oranges and cool blues create a dialogue between fire and water, symbolising passion, balance and control in the mountains. Greens and yellows add a fresh, natural dimension, evoking renewal, optimism and a deep connection to alpine landscapes.

Warm and cool greys, inspired by weathered stone and rugged terrain, express resilience and endurance. Together, these colours reflect authenticity, harmony and the enduring spirit of exploration; a visual expression of our mountain heritage reinterpreted through modern materials and performance needs.

**This is TRADIZIONE, for those who live the mountains with passion, confidence and respect for tradition.**

### Hiking



AKRON MID GTX®



AKRON GTX®



ORON MID WP



ORON WP



ORON

### Light Hiking



NEXUS MID GTX®



NEXUS GTX®



NEXUS



PULSE 2 WP **NEW**



PULSE 2 **NEW**

### Kids



KIDS PULSE MID WP



KIDS PULSE WP



KIDS PULSE



# TOWER 4 EXTREME GTX®

Ideal for the experienced mountaineer, this thermally insulated crampon-compatible boot delivers agile precision and confident control for winter ascents, glacier crossings and high-altitude routes.

**ACTIVITY:**



MOUNTAINEERING



ICE CLIMBING

**CODE:**

black/garmont red  
S04010\_U002400  
003185

size range: 4-12,5 UK **NEW**

**FIT:**



PRECISE

REGULAR

WIDE



Single dial BOA® Fit System wraps the forefoot for micro-adjustable closure, paired with a strap-secured collar for a stable fit



Integrated above-ankle gaiter with elasticated band for sealed protection



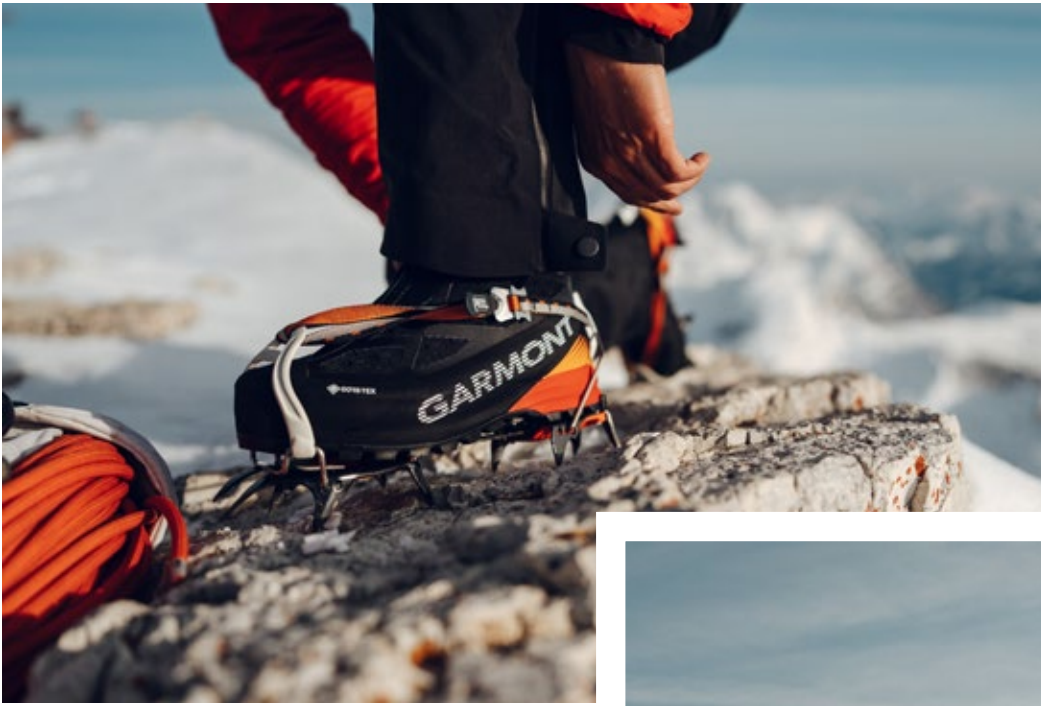
a.d.d.®: Asymmetrical cuff

**TECH SPECS**

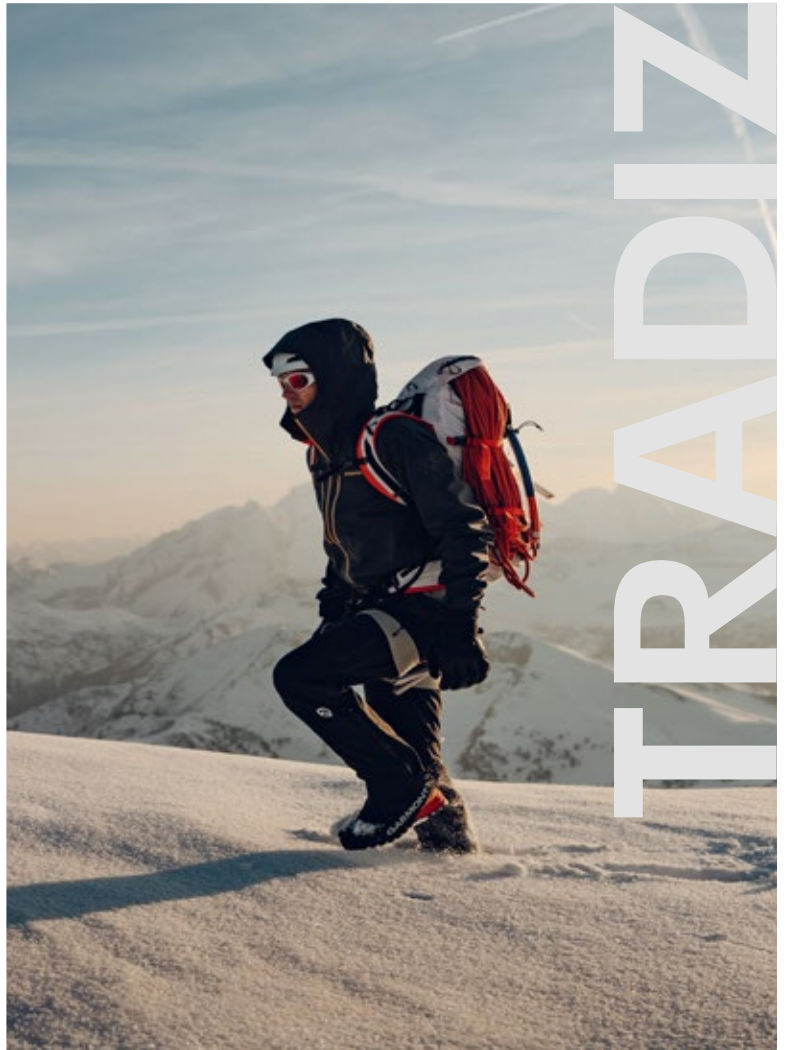
<b>UPPER</b>	Inner boot: Polyester mesh. External gaiter: Lenzi® Putek (technical nylon mesh with PU yarn) + stretch nylon and polyester fabric + TPU weldings + rubber rand + TPU heel and toe cup
<b>LINING</b>	PFC-free Gore-Tex® Insulated (ePE)
<b>FOOTBED</b>	Ortholite® O-Therm™ with 5% recycled rubber
<b>LASTING BOARD</b>	Fiberglass and nylon
<b>MIDSOLE</b>	Monodensity PU + TPU crampon insert
<b>OUTSOLE</b>	VIBRAM® VERTEX with DURASTEP compound and TRACTION LUG technology
<b>WEIGHT</b>	785 gr (1/2 pair size 8 UK)

**TECHNOLOGIES:**





TECHNICITY  
AGILITY  
INSULATION



TRADIZIONE

# TOWER 3.0 GTX®

An ideal boot for modern mountaineering that combines technicity, protection and lightness.

**ACTIVITY:**



MOUNTAINEERING



TREKKING

**COLORS:**



black/raspberry pink  
S04009\_W002908  
002887  
size range: 3,5-8,5 UK

**CODE:**

black/garmont orange  
S04009\_U002401  
002886  
size range: 4-12,5 UK

**FIT:**



PRECISE

REGULAR

WIDE



**OVERLASTING RUBBER RAND CONSTRUCTION:** to improve stability, durability and precision thanks to a better connection between the upper and the sole package



**HEEL LOCK SYSTEM:** helps prevent heel slip and blisters



**a.d.d.®:** Anatomical tongue - Asymmetrical cuff

**TECH SPECS**

<b>UPPER</b>	Lenzi® Putek (technical nylon mesh with PU yarn) + 1.6 mm nylon microfiber and PU coating + TPU weldings + rubber rand + TPU heel cup
<b>LINING</b>	PFC-free Gore-Tex® More Seasons (ePE)
<b>FOOTBED</b>	Ortholite® Ultra™ with 5% recycled rubber
<b>LASTING BOARD</b>	Polypropylene
<b>MIDSOLE</b>	Monodensity PU + TPU crampon insert
<b>OUTSOLE</b>	VIBRAM® VERTEX with DURASTEP compound and TRACTION LUG technology
<b>WEIGHT</b>	695 gr (1/2 pair size 8 UK)

**TECHNOLOGIES:**



# PINNACLE EVO GTX®

Ideal for mountaineering and high-altitude work, this boot offers unmatched durability, comfort, and precision.

ACTIVITY:



MOUNTAINEERING



MOUNTAIN WORKS

FIT:



PRECISE      REGULAR      WIDE

CODE:

black/garmont orange  
S07004\_M002401  
003057  
size range: 6-13 UK



ONE PIECE SUEDE LEATHER: durable and protective



D3O® in the ankle padding and in the footbed



a.d.d.®: Differential ankle pads

## TECH SPECS

UPPER	2.6-2.8 mm suede leather
LINING	PFC-free Gore-Tex® More Seasons (ePE)
FOOTBED	Arneplant® with D3O® insert
LASTING BOARD	Polypropylene
MIDSOLE	Dual density microporous EVA + crampon insert
OUTSOLE	VIBRAM® DOLENT with MONT compound
WEIGHT	735 gr (1/2 pair size 8 UK)

TECHNOLOGIES:



D3O® Protected

arneplant®

add®

# ASCENT EVO GTX®

An ideal boot for mountaineering and via ferrata, appreciated for its precise fit and great versatility.

**ACTIVITY:**



MOUNTAINEERING



VIA FERRATA

**COLORS:**



olivine green/racing red  
S01082\_M808409  
003102  
size range: 6-13 UK



ultimate grey/garnet red  
S01082\_W046440  
003103  
size range: 3-8,5 UK

**CODE:**

jay blue/sheen yellow  
S01082\_M651201  
003101  
size range: 6-13 UK



**FIT:**



PRECISE

REGULAR

WIDE



TIGHT TOE BOX: maximum precision on technical passages



a.d.d.®: Precision lacing - Anatomical tongue - Asymmetrical cuff

**TECH SPECS**

<b>UPPER</b>	1.6-1.8 mm suede leather + microfiber insert
<b>LINING</b>	PFC-free Gore-Tex® More Seasons (ePE)
<b>FOOTBED</b>	Ortholite® Ultra™ with 5% recycled rubber
<b>LASTING BOARD</b>	Polypropylene
<b>MIDSOLE</b>	Monodensity PU + crampon insert
<b>OUTSOLE</b>	VIBRAM® MATON with MONT compound
<b>WEIGHT</b>	690 gr (1/2 pair size 8 UK)

**TECHNOLOGIES:**



Ortholite®

add

VIA FERRATA

# PINNACLE TREK GTX®

Perfect for backpacking, working at altitude or tracking prints deep in the backcountry, this boot delivers maximum protection and support on long treks.

ACTIVITY:



TREKKING



MOUNTAIN WORKS

FIT:



PRECISE

REGULAR

WIDE

CODE:

malt brown/black  
S07005\_U311002  
003182  
size range: 4-13 UK



ONE PIECE NUBUCK LEATHER:  
durable and protective



a.d.d.®: Differential ankle pads

## TECH SPECS

UPPER	2.3-2.5 mm nubuck leather
LINING	PFC-free Gore-Tex® More Seasons (ePE)
FOOTBED	Garmont bi-layer (felt and memory foam)
LASTING BOARD	Polypropylene
MIDSOLE	Dual density PU
OUTSOLE	VIBRAM® CURCUMA with XS TREK compound
WEIGHT	795 gr (1/2 pair size 8 UK)

TECHNOLOGIES:



a.d.d.

# HEXAGON GTX®

An ideal boot for multi-day technical trekking, combining lightness and protection. Its overlasting construction ensures exceptional durability.

**ACTIVITY:**



TREKKING



HIKING

**COLORS:**



black/garmont orange  
S01081\_M002401  
003041  
size range: 6-13 UK



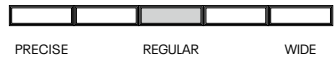
corsair blue/silt green  
S01081\_W613845  
003043  
size range: 4-8,5 UK

**CODE:**

fin blue/sheen yellow  
S01081\_M645201  
003042  
size range: 6-13 UK



**FIT:**



**OVERLASTING RUBBER RAND CONSTRUCTION:** to improve stability, durability and precision thanks to a better connection between the upper and the sole package



**HEEL LOCK SYSTEM:** helps prevent heel slip and blisters



**a.d.d.®:** Anatomical tongue - Asymmetrical cuff

TECH SPECS	
<b>UPPER</b>	Abrasion resistant mesh + suede leather
<b>LINING</b>	PFC-free Gore-Tex® More Seasons (ePE)
<b>FOOTBED</b>	Arneplant® with D30® insert
<b>LASTING BOARD</b>	Polypropylene
<b>MIDSOLE</b>	Monodensity EVA
<b>OUTSOLE</b>	VIBRAM® VERTEX with DURASTEPP compound and TRACTION LUG technology
<b>WEIGHT</b>	545 gr (1/2 pair size 8 UK)

TECHNOLOGIES:

# NEBRASKA 3 GTX®

An ideal boot for the traditional explorer, offering lasting comfort and reliable support. Perfect for multi-day treks across demanding terrain.

## ACTIVITY:



TREKKING



HIKING

## FIT:



PRECISE

REGULAR

WIDE

## CODE:

toffee brown/black  
S01086\_M312002  
003150  
size range: 6-13 UK

## COLORS:



thunderstorm grey/radiant yellow  
S01086\_M048200  
003149  
size range: 6-13 UK



dried grey/baltic blue  
S01086\_W068663  
003151  
size range: 3-8,5 UK



a.d.d.®: Asymmetrical Cuff -  
Anatomical Tongue - Differential  
Ankle Pads



NUBUCK LEATHER: durable and  
protective

## TECH SPECS

<b>UPPER</b>	1.6-1.8 mm nubuck leather + polyester mesh
<b>LINING</b>	PFC-free Gore-Tex® More Seasons (ePE)
<b>FOOTBED</b>	Thermoformed Arneplant® PU foam
<b>LASTING BOARD</b>	Cellulose fiber
<b>MIDSOLE</b>	Dual density microporous EVA
<b>OUTSOLE</b>	VIBRAM® ANTRONA with XS TREK EVO compound and TRACTION LUG Technology
<b>WEIGHT</b>	655 gr (1/2 pair size 8 UK)

## TECHNOLOGIES:



# LAGORAI 3 GTX®

A versatile boot for classic trekking, designed to deliver dependable comfort, weather protection, and confident grip across varied terrain.

**ACTIVITY:**



TREKKING



HIKING

**COLORS:**



thunderstorm grey/sea blue  
S01085\_M048655  
003146  
size range: 6-13 UK



formal grey/ether blue  
S01085\_W039656  
003148  
size range: 3-8,5 UK

**CODE:**

chocolate brown/racing red  
S01085\_M343409  
003147  
size range: 6-13 UK



a.d.d.®: Asymmetrical Cuff - Precision Lacing

**FIT:**



**TECH SPECS**

<b>UPPER</b>	1.6-1.8 mm suede leather + polyester mesh
<b>LINING</b>	PFC-free Gore-Tex® Most Breathable (ePE)
<b>FOOTBED</b>	Thermoformed Arneplant® PU foam
<b>LASTING BOARD</b>	Cellulose fiber
<b>MIDSOLE</b>	Dual density microporous EVA
<b>OUTSOLE</b>	VIBRAM® ANTRONA with XS TREK EVO compound and TRACTION LUG Technology
<b>WEIGHT</b>	605 gr (1/2 pair size 8 UK)

**TECHNOLOGIES:**



# VETTA EVO GTX®

An ideal shoe for approach and via ferrata, with a precise fit and a protected ankle. It guarantees maximum precision, grip and support on all terrains.

## ACTIVITY:



APPROACH



VIA FERRATA

## FIT:



PRECISE

REGULAR

WIDE

## CODE:

thunderstorm grey/goblin blue  
S03008\_M048652  
003114  
size range: 6-13 UK

## COLORS:



black/garmont orange  
S03008\_M002401  
002933  
size range: 6-13 UK



iceberg green/whitecup grey  
S03008\_W836013  
002935  
size range: 3-8,5 UK



HEEL LOCK SYSTEM: helps prevent heel slip and blisters



a.d.d.®: Precision lacing - Anatomical tongue



PU HEEL INSERT: stability and control

## TECH SPECS

<b>UPPER</b>	1.6-1.8 mm suede leather + rubber rand
<b>LINING</b>	PFC-free Gore-Tex® More Seasons (ePE) with recycled contents
<b>FOOTBED</b>	Ortholite® Ultra™ with 5% recycled rubber
<b>LASTING BOARD</b>	Polypropylene
<b>MIDSOLE</b>	Dual density microporous EVA + PU insert
<b>OUTSOLE</b>	VIBRAM® MATON with MEGAGRIP compound
<b>WEIGHT</b>	580 gr (1/2 pair size 8 UK)

## TECHNOLOGIES:



Ortholite®

add



EMF



# DRAGONTAIL MNT 3 GTX®

A true expression of our approach heritage, this shoe is designed for traditional approach and via ferrata with a precise fit and stiff construction for maximum grip, stability, and control on technical terrain.

**ACTIVITY:**



APPROACH



VIA FERRATA

**COLORS:**

**CODE:**

insigna blue/ancient beige  
 S02022\_M602326  
 003208  
 size range: 6-13 UK **NEW**

**FIT:**



bristol black/military green  
 S02022\_M069832  
 003202  
 size range: 6-13 UK **NEW**



radiant yellow/ancient beige  
 S02022\_M200326  
 003205  
 size range: 6-13 UK **NEW**



black/olivine green  
 S02022\_M002808  
 003233  
 size range: 6-13 UK **NEW**



**HEEL LOCK SYSTEM:** helps prevent heel slip and blisters



**Lace Protection Wings:** Side wings that protect the lacing area from abrasion and impact, enhancing durability on technical terrain.



**a.d.d.®:** Anatomical tongue



military green/cool blue  
 S02022\_W832636  
 003206  
 size range: 3-8,5 UK **NEW**

TECH SPECS	
<b>UPPER</b>	1.4-1.6 mm suede leather + Lorenzi Lyliane suede (60% recycled) + rubber rand
<b>LINING</b>	PFC-free Gore-tex® Most Breathable (ePE) with recycled contents
<b>FOOTBED</b>	Ortholite® Hybrid Plus Recycled™
<b>LASTING BOARD</b>	Polypropylene
<b>MIDSOLE</b>	Dual density microporous EVA + PU insert
<b>OUTSOLE</b>	VIBRAM® MATON with MEGAGRIP compound
<b>WEIGHT</b>	565 gr (1/2 pair size 8 UK)

**TECHNOLOGIES:**





PROTECTION  
SUPPORT  
TRACTION



TRADIZIONE

# DRAGONTAIL LT EVO

Ideal for approach and via ferrata, this shoe offers a precise fit and compact tread pattern for maximum grip and control on technical terrain.

**ACTIVITY:**



APPROACH



VIA FERRATA

**COLORS:**



black/sun orange  
S02017\_M002443  
003190  
size range: 6-13 UK

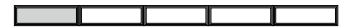
**NEW**

**CODE:**

olivine green/stone grey  
S02017\_M808044  
003201  
size range: 6-13 UK

**NEW**

**FIT:**



PRECISE

REGULAR

WIDE



skyline grey/formal grey  
S02017\_W067039  
003203  
size range: 3-8,5 UK

**NEW**



HEEL LOCK SYSTEM: helps prevent heel slip and blisters



a.d.d.®: Precision lacing - Anatomical tongue

**TECH SPECS**

<b>UPPER</b>	1.6-1.8 mm suede leather + rubber rand
<b>LINING</b>	Polyester mesh
<b>FOOTBED</b>	Ortholite® Ultra™ with 5% recycled rubber
<b>LASTING BOARD</b>	Polypropylene
<b>MIDSOLE</b>	Tridensity microporous EVA
<b>OUTSOLE</b>	VIBRAM® STICKY with MEGAGRIP compound
<b>WEIGHT</b>	440 gr (1/2 pair size 8 UK)

**TECHNOLOGIES:**





# AKRON MID GTX®

Ideal for technical routes and via ferrata, this boot offers ankle protection, stability, and confidence on ever-changing terrain.

**ACTIVITY:**



HIKING



VIA FERRATA

**COLORS:**



black/garmont orange  
S14001\_M002401  
003044  
size range: 6-13 UK

**CODE:**

shadow green/flame orange  
S14001\_M855441  
003204  
size range: 6-13 UK **NEW**

**FIT:**



PRECISE

REGULAR

WIDE



black/atlantic blue  
S14001\_W002654  
003163  
size range: 3-8,5 UK **NEW**



taupe brown/taupe rose  
S14001\_W321914  
003046  
size range: 3-8,5 UK



**LACELOCK:** for better adjustment and pressure distribution of the lacing system



**HEEL LOCK SYSTEM:** helps prevent heel slip and blisters



**a.d.d.®:** Precision lacing - Anatomical tongue - Asymmetrical cuff

**TECH SPECS**

<b>UPPER</b>	1.4-1.6 mm suede leather + microfiber + RPU inserts
<b>LINING</b>	PFC-free Gore-Tex® Most Breathable (ePE) with recycled contents
<b>FOOTBED</b>	Ortholite® Ultra™ with 5% recycled rubber
<b>LASTING BOARD</b>	Semi-rigid polypropylene
<b>MIDSOLE</b>	Monodensity EVA
<b>OUTSOLE</b>	MICHELIN® OFF ROAD with OCX3 & OC1 compounds and Fiberlite technology
<b>WEIGHT</b>	515 gr (1/2 pair size 8 UK)

**TECHNOLOGIES:**



# AKRON GTX®

An ideal shoe for technical routes and via ferrata, with precise lacing all the way to the toe. It combines technicity and versatility.

## ACTIVITY:



HIKING



VIA FERRATA

## FIT:



PRECISE      REGULAR      WIDE

## CODE:

leaf green/thrush beige  
S14002\_M064340  
003161  
size range: 6-13 UK

## COLORS:



fin blue/citrus orange  
S14002\_M645436  
003048  
size range: 6-13 UK



alloy grey/mineral red  
S14002\_W065429  
003162  
size range: 3-8,5 UK



LACELOCK: for better adjustment and pressure distribution of the lacing system



HEEL LOCK SYSTEM: helps prevent heel slip and blisters



a.d.d.®: Precision lacing - Anatomical tongue - Asymmetrical cuff



glacier blue/whitecup grey  
S14002\_W646013  
003050  
size range: 3-8,5 UK

## TECH SPECS

<b>UPPER</b>	1.4-1.6 mm suede leather + microfiber + RPU inserts
<b>LINING</b>	PFC-free Gore-Tex® Most Breathable (ePE) with recycled contents
<b>FOOTBED</b>	Ortholite® Ultra™ with 5% recycled rubber
<b>LASTING BOARD</b>	Semi-rigid polypropylene
<b>MIDSOLE</b>	Monodensity EVA
<b>OUTSOLE</b>	MICHELIN® OFF ROAD with OCX3 & OC1 compounds and Fiberlite technology
<b>WEIGHT</b>	470 gr (1/2 pair size 8 UK)

## TECHNOLOGIES:



# ORON MID WP

Perfect for day hikes, this versatile mid-cut boot delivers reliable traction and cushioning for confident steps over rocky paths and mixed terrain.

**ACTIVITY:**



HIKING



LIGHT HIKING

**COLORS:**



sea blue/sheen yellow  
S17001\_M655201  
003153  
size range: 6-13 UK



black/huckleberry violet  
S17001\_W002919  
003154  
size range: 3-8,5 UK

**CODE:**

skyline grey/flame orange  
S17001\_M067441  
003152  
size range: 6-13 UK



**FIT:**



PRECISE

REGULAR

WIDE



One-piece upper with overlap design



a.d.d.®: Precision lacing - Asymmetrical Cuff

**TECH SPECS**

<b>UPPER</b>	1.6 mm microbuck + polyester mesh
<b>LINING</b>	G-Dry waterproof membrane
<b>FOOTBED</b>	Thermoformed Garmont PU foam
<b>LASTING BOARD</b>	Polypropylene
<b>MIDSOLE</b>	Monodensity EVA
<b>OUTSOLE</b>	GTF with Enduro compound
<b>WEIGHT</b>	515 gr (1/2 pair size 8 UK)

**TECHNOLOGIES:**



# ORON WP

Designed for day hikes and outdoor escapes, this shoe offers lightweight waterproof protection and lasting comfort in changing weather conditions.

## ACTIVITY:



HIKING



LIGHT HIKING

## FIT:



PRECISE      REGULAR      WIDE

## CODE:

sea blue/sunset yellow  
S17002\_M655218  
003155  
size range: 6-13 UK

## COLORS:



leaf green/flame orange  
S17002\_M064441  
003156  
size range: 6-13 UK



huckleberry violet/ultimate grey  
S17002\_W919046  
003157  
size range: 3-8,5 UK



One-piece upper with overlap design



a.d.d.®: Precision lacing



thunderstorm grey/silt green  
S17002\_W048845  
003158  
size range: 3-8,5 UK

## TECH SPECS

<b>UPPER</b>	1.6 mm microbuck + polyester mesh
<b>LINING</b>	G-Dry waterproof membrane
<b>FOOTBED</b>	Thermoformed Garmont PU foam
<b>LASTING BOARD</b>	Polypropylene
<b>MIDSOLE</b>	Monodensity EVA
<b>OUTSOLE</b>	GTF with Enduro compound
<b>WEIGHT</b>	460 gr (1/2 pair size 8 UK)

## TECHNOLOGIES:

G-DRY



add

E/W/F

# ORON

Ideal for day hikes and outdoor escapes, this lightweight shoe offers comfort, protection, and stability to support every step with confidence.

**ACTIVITY:**



HIKING



LIGHT HIKING

**COLORS:**



skyline grey/sheen yellow  
S17003\_M067201  
003159  
size range: 6-13 UK

**CODE:**

thrush beige/faience blue  
S17003\_M340666  
003199  
size range: 6-13 UK **NEW**

**FIT:**



goblin blue/wax yellow  
S17003\_W652219  
003200  
size range: 3-8,5 UK **NEW**



formal grey/mineral red  
S17003\_W039429  
003160  
size range: 3-8,5 UK



One-piece upper with overlap design



a.d.d.®: Precision lacing

**TECH SPECS**

<b>UPPER</b>	1.6 mm microbuck + polyester mesh
<b>LINING</b>	Polyester mesh
<b>FOOTBED</b>	Thermoformed Garmont PU foam
<b>LASTING BOARD</b>	Polypropylene
<b>MIDSOLE</b>	Monodensity EVA
<b>OUTSOLE</b>	GTF with Enduro compound
<b>WEIGHT</b>	450 gr (1/2 pair size 8 UK)

**TECHNOLOGIES:**



# NEXUS MID GTX®

A mid-cut shoe ideal for hiking, lightweight and flexible. It offers enhanced ankle support, ensuring traction, responsiveness and stability on all terrains.

## ACTIVITY:



LIGHT HIKING



HIKING

## FIT:



PRECISE

REGULAR

WIDE

## CODE:

thunderstorm grey/peel orange

S16001\_M048437

003105

size range: 6-12,5 UK

## COLORS:



goblin blue/peel orange

S16001\_W652917

003106

size range: 3-8,5 UK



G-WRAP TECHNOLOGY, embraces the foot for better stability within the upper



ANTI-TORSION TPU INSERT integrated on the midsole at the medial arch



a.d.d.®: Precision lacing - Anatomical tongue - Asymmetrical cuff

## TECH SPECS

<b>UPPER</b>	Engineered mesh
<b>LINING</b>	PFC-free Gore-Tex® Most Breathable (ePE)
<b>FOOTBED</b>	Garmont PU foam
<b>MIDSOLE</b>	Monodensity EVA
<b>OUTSOLE</b>	VIBRAM® DURMAST with XS TREK compound and TRACTION LUG technology
<b>WEIGHT</b>	385 gr (1/2 pair size 8 UK)

## TECHNOLOGIES:



G-WRAP

# NEXUS GTX®

An ideal hiking shoe, lightweight and flexible. It ensures traction, responsiveness and stability on all terrains.

**ACTIVITY:**



LIGHT HIKING



HIKING

**COLORS:**

**CODE:**

thunderstorm grey/sheen yellow  
S16002\_M048201  
003107  
size range: 6-12,5 UK

**FIT:**



PRECISE

REGULAR

WIDE



gull grey/radiant yellow  
S16002\_M031200  
003108  
size range: 6-12,5 UK



goblin blue/silt green  
S16002\_W652845  
003109  
size range: 3-8,5 UK



G-WRAP TECHNOLOGY, embraces the foot for better stability within the upper



ANTI-TORSION TPU INSERT integrated on the midsole at the medial arch



a.d.d.®: Precision lacing - Anatomical tongue

**TECH SPECS**

<b>UPPER</b>	Engineered mesh
<b>LINING</b>	PFC-free Gore-Tex® Most Breathable (ePE)
<b>FOOTBED</b>	Garmont PU foam
<b>MIDSOLE</b>	Monodensity EVA
<b>OUTSOLE</b>	VIBRAM® DURMAST with XS TREK compound and TRACTION LUG technology
<b>WEIGHT</b>	340 gr (1/2 pair size 8 UK)

**TECHNOLOGIES:**



**G-WRAP**

# NEXUS

An ideal shoe for hiking, lightweight, flexible and breathable. It ensures traction, responsiveness and stability on all terrains.

## ACTIVITY:



LIGHT HIKING



HIKING

## FIT:



PRECISE

REGULAR

WIDE

## CODE:

goblin blue/sheen yellow  
S16003\_M652201  
003111  
size range: 6-13 UK

## COLORS:



titan blue/tango red  
S16003\_M653422  
003110  
size range: 6-13 UK



goblin blue/tango red  
S16003\_W652422  
003112  
size range: 3-8,5 UK



G-WRAP TECHNOLOGY, embraces the foot for better stability within the upper



ANTI-TORSION TPU INSERT integrated on the midsole at the medial arch



a.d.d.<sup>®</sup>: Precision lacing - Anatomical tongue



iceberg green/mesa rose  
S16003\_W836917  
003113  
size range: 3-8,5 UK

## TECH SPECS

<b>UPPER</b>	Engineered mesh
<b>LINING</b>	Mesh
<b>FOOTBED</b>	Garmont PU foam
<b>MIDSOLE</b>	Monodensity EVA
<b>OUTSOLE</b>	VIBRAM <sup>®</sup> DURMAST with XS TREK compound and TRACTION LUG technology
<b>WEIGHT</b>	315 gr (1/2 pair size 8 UK)

## TECHNOLOGIES:



G-WRAP

# PULSE 2 WP

A versatile hiking shoe for easy trails and mixed terrain. It delivers lasting comfort, reliable stability, and a natural stride over a variety of surfaces.

**ACTIVITY:**



LIGHT HIKING



HIKING

**COLORS:**

**CODE:**

leaf green/black  
S18002\_M064002  
003195  
size range: 6-13 UK

**NEW**



black/black  
S18002\_M002002  
003196  
size range: 6-13 UK

**NEW**



night purple/twilight rose  
S18002\_W921918  
003198  
size range: 3-8,5 UK

**NEW**



formal grey/black  
S18002\_W039002  
003197  
size range: 3-8,5 UK

**NEW**



a.d.d.®: Anatomical tongue



GTF: Garmont Traction Formula with All-Terrain compound and a hiking-specific design

**FIT:**



PRECISE

REGULAR

WIDE

**TECH SPECS**

<b>UPPER</b>	Knit fabric with 90% recycled polyester + TPU film protection
<b>LINING</b>	G-Dry waterproof membrane
<b>FOOTBED</b>	Garmont PU foam (with 25% recycled material)
<b>MIDSOLE</b>	Monodensity light EVA (10% recycled)
<b>OUTSOLE</b>	GTF with All Terrain compound
<b>WEIGHT</b>	400 gr (1/2 pair size 8 UK)

**TECHNOLOGIES:**





ALL-DAY COMFORT  
RAIN READY  
RECYCLED



TRADIZIONE

# PULSE 2

A versatile hiking shoe for easy trails and mixed terrain. It delivers lasting comfort, reliable stability, and a natural stride over a variety of surfaces.

**ACTIVITY:**



LIGHT HIKING



HIKING

**COLORS:**

**CODE:**

tango red/peel orange  
S18001\_M422437  
003192  
size range: 6-13 UK **NEW**

**FIT:**



PRECISE

REGULAR

WIDE



thrush beige/iceberg green  
S18001\_M340836  
003191  
size range: 6-13 UK **NEW**



titan blue/beetroot purple  
S18001\_W653922  
003194  
size range: 3-8,5 UK **NEW**



garmont white/wood beige  
S18001\_W001328  
003193  
size range: 3-8,5 UK **NEW**



a.d.d.<sup>®</sup>: Anatomical tongue



GTF: Garmont Traction Formula with All-Terrain compound and a hiking-specific design

**TECH SPECS**

<b>UPPER</b>	Knit fabric with 90% recycled polyester + TPU film protection
<b>LINING</b>	Mesh (100% recycled polyester)
<b>FOOTBED</b>	Garmont PU foam (with 25% recycled material)
<b>MIDSOLE</b>	Monodensity light EVA (10% recycled)
<b>OUTSOLE</b>	GTF with All Terrain compound
<b>WEIGHT</b>	380 gr (1/2 pair size 8 UK)

**TECHNOLOGIES:**





ALL-DAY COMFORT  
RECYCLED  
VERSATILITY



TRADIZIONE

# KIDS PULSE MID WP

A children's mid-cut hiking boot for enhanced ankle support featuring quick lacing. It guarantees grip, protection and freedom of movement.

## ACTIVITY:



LIGHT HIKING



MOUNTAIN LEISURE

## CODE:

mayfly green/primerose green  
S05028\_K829824  
003000  
size range: 25-39 EU

## FIT:



PRECISE

REGULAR

WIDE



FAST LACING SYSTEM allows children to tie their shoes independently



a.d.d.®: Asymmetrical cuff

## TECH SPECS

<b>UPPER</b>	3D polyester mesh + microfiber insert with PU coating + fabric reinforcements
<b>LINING</b>	G-Dry waterproof membrane
<b>FOOTBED</b>	Garmont PU foam
<b>OUTSOLE</b>	GTF KIDS MAGNET
<b>WEIGHT</b>	290 gr (1/2 pair size 31 EU)

TECHNOLOGIES:

G\_DRY



add



# KIDS PULSE WP

A children's low-cut hiking shoe, lightweight and versatile with quick lacing. It guarantees grip, protection and freedom of movement.

**ACTIVITY:**



LIGHT HIKING



MOUNTAIN LEISURE

**COLORS:**



corsair blue/lavender rose  
S05027\_K613905  
002997  
size range: 25-39 EU

**CODE:**

black/coronet blue  
S05027\_K002630  
002996  
size range: 25-39 EU

**FIT:**



PRECISE

REGULAR

WIDE



FAST LACING SYSTEM allows children to tie their shoes independently



a.d.d.®: Asymmetrical cuff

**TECH SPECS**

<b>UPPER</b>	3D polyester mesh + microfiber insert with PU coating + fabric reinforcements
<b>LINING</b>	G-Dry waterproof membrane
<b>FOOTBED</b>	Garmont PU foam
<b>OUTSOLE</b>	GTF KIDS MAGNET
<b>WEIGHT</b>	265 gr (1/2 pair size 31 EU)

**TECHNOLOGIES:**



# KIDS PULSE

A children's low-cut hiking shoe, lightweight and versatile, featuring quick lacing. It guarantees grip, protection and freedom of movement.

**ACTIVITY:**



LIGHT HIKING



MOUNTAIN LEISURE

**FIT:**



PRECISE      REGULAR      WIDE

**CODE:**

coronet blue/persimmon orange  
 S05026\_K630421  
 002994  
 size range: 25-39 EU

**COLORS:**



corydalis blue/raspberry pink  
 S05026\_K638908  
 002995  
 size range: 25-39 EU



FAST LACING SYSTEM allows children to tie their shoes independently



a.d.d.<sup>®</sup>: Asymmetrical cuff

TECH SPECS	
<b>UPPER</b>	3D polyester mesh + microfiber insert with PU coating + fabric reinforcements
<b>LINING</b>	Polyester lining on heel
<b>FOOTBED</b>	Garmont PU foam
<b>OUTSOLE</b>	GTF KIDS MAGNET
<b>WEIGHT</b>	235 gr (1/2 pair size 31 EU)

**TECHNOLOGIES:**



SPEED APPROACH

9.81 ONYX MID GTX®



003088  
raven black/pale beige  
S15001\_M057339  
size range: 6-13 UK

9.81 ONYX MID GTX®



003089  
nights blue/plein blue  
S15001\_M649650  
size range: 6-13 UK

9.81 ONYX MID GTX®



003090  
nights blue/lunar grey  
S15001\_W649049  
size range: 3-8,5 UK

9.81 ONYX MID GTX®



003091  
agate grey/hedge green  
S15001\_W058847  
size range: 3-8,5 UK

9.81 ONYX GTX®



003092  
raven black/firecracker orange  
S15002\_M057439  
size range: 6-13 UK

9.81 ONYX GTX®



003093  
nights blue/agate grey  
S15002\_M649058  
size range: 6-13 UK

9.81 ONYX GTX®



003094  
agate grey/firecracker orange  
S15002\_M058439  
size range: 6-13 UK

9.81 ONYX GTX®



003207  
gray blue/very violet  
S15002\_W667916  
size range: 3-8,5 UK

9.81 ONYX GTX®



003096  
agate grey/hedge green  
S15002\_W058847  
size range: 3-8,5 UK

9.81 ONYX MB GTX®



003143  
kelp green/beluga black  
S15005\_M851066  
size range: 6-13 UK

9.81 ONYX MB GTX®



003142  
iron blue/navy blue  
S15005\_M657658  
size range: 6-13 UK

9.81 ONYX MB GTX®



003144  
ombre blue/stone blue  
S15005\_W661662  
size range: 3-8,5 UK

9.81 ONYX MB GTX®



003145  
balsam green/navy blue  
S15005\_W852658  
size range: 3-8,5 UK

9.81 ONYX



003186  
iron grey/vibrant orange  
S15006\_M017442  
size range: 6-13 UK

9.81 ONYX



003187  
dusky green/dove grey  
S15006\_M854034  
size range: 6-13 UK

9.81 ONYX



003189  
sweet violet/majolica blue  
S15006\_W920665  
size range: 3-8,5 UK

SPEED HYBRID

9.81 META GTX®



003213  
sea grey/cub brown  
S15008\_M072344  
size range: 6-12,5 UK

9.81 META GTX®



003214  
sea grey/pillar grey  
S15008\_W072073  
size range: 3-8,5 UK

9.81 META

NEW



003216

quiet gray/tango red

S15009\_M074422

size range: 6-12,5 UK

9.81 META

NEW



003215

sea grey/spectra green

S15009\_M072857

size range: 6-12,5 UK

9.81 META

NEW



003218

wind grey/mock orange

S15009\_W075424

size range: 3-8,5 UK

9.81 META

NEW



003217

grisaille blue/sea grey

S15009\_W670072

size range: 3-8,5 UK

SPEED HYBRID

9.81 ETERE MAX GTX®



003139

ridge grey/birch white

S15004\_M062063

size range: 6-13 UK

9.81 ETERE MAX GTX®



003137

gunmental grey/iron blue

S15004\_M012657

size range: 6-13 UK

9.81 ETERE MAX GTX®



003140

jadeite green/navy blue

S15004\_W850658

size range: 3-8,5 UK

9.81 ETERE MAX GTX®



003141

infinity blue/ensign blue

S15004\_W659660

size range: 3-8,5 UK

SPEED HIKING

9.81 ETERE 2

NEW



003210

mineral green/corsair blue

S15007\_M856668

size range: 6-13 UK

9.81 ETERE 2

NEW



003209

tap black/vibrant orange

S15007\_M070442

size range: 6-13 UK

9.81 ETERE 2

NEW



003212

stones white/lavender violet

S15007\_W071923

size range: 3-8,5 UK

9.81 ETERE 2

NEW



003211

tap black/iron brown

S15007\_W070316

size range: 3-8,5 UK

**MOUNTAINEERING**

**TOWER 4 EXTREME GTX®**



NEW

003185  
black/garmont red  
S04010\_U002400  
size range: 4-12,5 UK

**TOWER 3.0 GTX®**



002886  
black/garmont orange  
S04009\_U002401  
size range: 4-12,5 UK

**TOWER 3.0 GTX®**



002887  
black/raspberry pink  
S04009\_W002908  
size range: 3,5-8,5 UK

**PINNACLE EVO GTX®**



003057  
black/garmont orange  
S07004\_M002401  
size range: 6-13 UK

**ASCENT EVO GTX®**



003102  
olive green/racing red  
S01082\_M808409  
size range: 6-13 UK

**ASCENT EVO GTX®**



003101  
jay blue/sheen yellow  
S01082\_M651201  
size range: 6-13 UK

**ASCENT EVO GTX®**



003103  
ultimate grey/garnet red  
S01082\_W046440  
size range: 3-8,5 UK

**TREKKING**

**PINNACLE TREK GTX®**



003182  
malt brown/black  
S07005\_U311002  
size range: 4-13 UK

**HEXAGON GTX®**



003042  
fin blue/sheen yellow  
S01081\_M645201  
size range: 6-13 UK

**HEXAGON GTX®**



003041  
black/garmont orange  
S01081\_M002401  
size range: 6-13 UK

**HEXAGON GTX®**



003043  
corsair blue/silt green  
S01081\_W613845  
size range: 4-8,5 UK

**NEBRASKA 3 GTX®**



003150  
toffee brown/black  
S01086\_M312002  
size range: 6-13 UK

**NEBRASKA 3 GTX®**



003149  
thunderstorm grey/radiant yellow  
S01086\_M048200  
size range: 6-13 UK

**NEBRASKA 3 GTX®**



003151  
dried grey/baltic blue  
S01086\_W068663  
size range: 3-8,5 UK

**LAGORAI 3 GTX®**



003147  
chocolate brown/racing red  
S01085\_M343409  
size range: 6-13 UK

**LAGORAI 3 GTX®**



003146  
thunderstorm grey/sea blue  
S01085\_M048655  
size range: 6-13 UK

**LAGORAI 3 GTX®**



003148  
formal grey/ether blue  
S01085\_W039656  
size range: 3-8,5 UK

VETTA EVO GTX®



003114  
thunderstorm grey/goblin blue  
S03008\_M048652  
size range: 6-13 UK

VETTA EVO GTX®



002933  
black/garmont orange  
S03008\_M002401  
size range: 6-13 UK

VETTA EVO GTX®



002935  
iceberg green/whitecup grey  
S03008\_W836013  
size range: 3-8,5 UK

DRAGONTAIL MNT 3 GTX®

NEW



003208  
insigna blue/ancient beige  
S02022\_M602326  
size range: 6-13 UK

DRAGONTAIL MNT 3 GTX®

NEW



003202  
bristol black/military green  
S02022\_M069832  
size range: 6-13 UK

DRAGONTAIL MNT 3 GTX®

NEW



003205  
radiant yellow/ancient beige  
S02022\_M200326  
size range: 6-13 UK

DRAGONTAIL MNT 3 GTX®

NEW



003233  
black/olivine green  
S02022\_M002808  
size range: 6-13 UK

DRAGONTAIL MNT 3 GTX®

NEW



003206  
military green/cool blue  
S02022\_W832636  
size range: 3-8,5 UK

DRAGONTAIL LT EVO

NEW



003201  
olivine green/stone grey  
S02017\_M808044  
size range: 6-13 UK

DRAGONTAIL LT EVO

NEW



003190  
black/sun orange  
S02017\_M002443  
size range: 6-13 UK

DRAGONTAIL LT EVO

NEW



003203  
skyline grey/formal grey  
S02017\_W067039  
size range: 3-8,5 UK

AKRON MID GTX®

NEW



003204  
shadow green/flame orange  
S14001\_M855441  
size range: 6-13 UK

AKRON MID GTX®



003044  
black/garmont orange  
S14001\_M002401  
size range: 6-13 UK

AKRON MID GTX®

NEW



003163  
black/atlantic blue  
S14001\_W002654  
size range: 3-8,5 UK

AKRON MID GTX®



003046  
taupe brown/taupe rose  
S14001\_W321914  
size range: 3-8,5 UK

AKRON GTX®



003161  
leaf green/thrush beige  
S14002\_M064340  
size range: 6-13 UK

AKRON GTX®



003048  
fin blue/citrus orange  
S14002\_M645436  
size range: 6-13 UK

AKRON GTX®



003162  
alloy grey/mineral red  
S14002\_W065429  
size range: 3-8,5 UK

AKRON GTX®



003050  
glacier blue/whitecup grey  
S14002\_W646013  
size range: 3-8,5 UK

HIKING

ORON MID WP



003152  
skyline grey/flame orange  
S17001\_M067441  
size range: 6-13 UK

ORON MID WP



003153  
sea blue/sheen yellow  
S17001\_M655201  
size range: 6-13 UK

ORON MID WP



003154  
black/huckleberry violet  
S17001\_W002919  
size range: 3-8,5 UK

ORON WP



003155  
sea blue/sunset yellow  
S17002\_M655218  
size range: 6-13 UK

ORON WP



003156  
leaf green/flame orange  
S17002\_M064441  
size range: 6-13 UK

ORON WP



003157  
huckleberry violet/ultimate grey  
S17002\_W919046  
size range: 3-8,5 UK

ORON WP



003158  
thunderstorm grey/silt green  
S17002\_W048845  
size range: 3-8,5 UK

ORON



003199  
thrush beige/faience blue  
S17003\_M340666  
size range: 6-13 UK

ORON



003159  
skyline grey/sheen yellow  
S17003\_M067201  
size range: 6-13 UK

ORON



003200  
goblin blue/wax yellow  
S17003\_W652219  
size range: 3-8,5 UK

ORON



003160  
formal grey/mineral red  
S17003\_W039429  
size range: 3-8,5 UK

LIGHT HIKING

NEXUS MID GTX®



003105  
thunderstorm grey/peel orange  
S16001\_M048437  
size range: 6-12,5 UK

NEXUS MID GTX®



003106  
goblin blue/mesa rose  
S16001\_W652917  
size range: 3-8,5 UK

NEXUS GTX®



003107  
thunderstorm grey/sheen yellow  
S16002\_M048201  
size range: 6-12,5 UK

NEXUS GTX®



003108  
gull grey/radiant yellow  
S16002\_M031200  
size range: 6-12,5 UK

NEXUS GTX®



003109  
goblin blue/silt green  
S16002\_W652845  
size range: 3-8,5 UK

NEXUS



003111  
goblin blue/sheen yellow  
S16003\_M652201  
size range: 6-13 UK

NEXUS



003110  
titan blue/tango red  
S16003\_M653422  
size range: 6-13 UK

NEXUS



003112  
goblin blue/tango red  
S16003\_W652422  
size range: 3-8,5 UK

NEXUS



003113  
iceberg green/mesa rose  
S16003\_W836917  
size range: 3-8,5 UK

PULSE 2 WP

NEW



003195  
leaf green/black  
S18002\_M064002  
size range: 6-13 UK

PULSE 2 WP

NEW



003196  
black/black  
S18002\_M002002  
size range: 6-13 UK

PULSE 2 WP

NEW



003198  
night purple/twilight rose  
S18002\_W921918  
size range: 3-8,5 UK

PULSE 2 WP

NEW



003197  
formal grey/black  
S18002\_W039002  
size range: 3-8,5 UK

PULSE 2

NEW



003192  
tango red/peel orange  
S18001\_M422437  
size range: 6-13 UK

PULSE 2

NEW



003191  
thrush beige/iceberg green  
S18001\_M340836  
size range: 6-13 UK

PULSE 2

NEW



003194  
titan blue/beetroot purple  
S18001\_W653922  
size range: 3-8,5 UK

PULSE 2

NEW



003193  
garmont white/wood beige  
S18001\_W001328  
size range: 3-8,5 UK

KIDS PULSE MID WP



003000  
mayfly green/primerose green  
S05028\_K829824  
size range: 25-39 EU

KIDS PULSE WP



002996  
black/coronet blue  
S05027\_K002630  
size range: 25-39 EU

KIDS PULSE WP



002997  
corsair blue/lavender rose  
S05027\_K613905  
size range: 25-39 EU

KIDS PULSE



002994  
coronet blue/persimmon orange  
S05026\_K630421  
size range: 25-39 EU

KIDS PULSE



002995  
corydalis blue/raspberry pink  
S05026\_K638908  
size range: 25-39 EU

# POINT OF SALE MATERIALS



GARMONT® BRAND pillar  
32x32x90 cm  
MKO245



GARMONT® logo board for slatwalls - 50cm  
MKO249  
or  
GARMONT® logo board for slatwalls - 10cm  
MKO250



GARMONT® square pouf, contour lines  
45x45x45 cm  
MKO210



9.81 FREE STANDIND PRODUCT DISPLAY  
H 150 cm  
MKO248



9.81 SHOE DISPLAY  
32x32x30 cm  
MKO247



TRADIZIONE SHOE DISPLAY  
32x32x22 cm  
MKO246



Free-standing product display  
MKO196  
and  
GARMONT® back for free-standing display  
MKO197

# POINT OF SALE MATERIALS



GARMONT® indoor event flag  
H 200 cm  
MKO209



Shopping bag  
pack of 25  
MKO158



Logo carpet black  
80x50 cm  
MKO160



Onyx component ring  
consisting of 3 components on a ring  
MKO252

All pictures shown are for illustration purposes only and may vary from the final product.  
GARMONT® reserves the right to update, cancel or change products or specifications at any time without notice.

# SIZE CHART

## UNISEX

UK:	3	3,5	4	4,5	5	5,5	6	6,5	7	7,5	8	8,5	9	9,5	10	10,5	11	11,5	12	12,5	13
USA:	4	4,5	5	5,5	6	6,5	7	7,5	8	8,5	9	9,5	10	10,5	11	11,5	12	12,5	13	13,5	14
EUR:	35	36	37	37,5	38	39	39,5	40	41	41,5	42	42,5	43	44	44,5	45	46	46,5	47	47,5	48
MP:	215	220	225	230	235	240	245	250	255	260	265	270	275	280	285	290	295	300	305	310	315

## WOMAN

UK:	3	3,5	4	4,5	5	5,5	6	6,5	7	7,5	8	8,5
USA:	5	5,5	6	6,5	7	7,5	8	8,5	9	9,5	10	10,5
EUR:	35	36	37	37,5	38	39	39,5	40	41	41,5	42	42,5
MP:	215	220	225	230	235	240	245	250	255	260	265	270

## MAN

UK:	6	6,5	7	7,5	8	8,5	9	9,5	10	10,5	11	11,5	12	12,5	13
USA:	7	7,5	8	8,5	9	9,5	10	10,5	11	11,5	12	12,5	13	13,5	14
EUR:	39,5	40	41	41,5	42	42,5	43	44	44,5	45	46	46,5	47	47,5	48
MP:	245	250	255	260	265	270	275	280	285	290	295	300	305	310	315

## KIDS

EUR:	25	26	27	28	29	30	31	32	33	34	35	36	37	38	39
UK:	7,5	8,5	9	10	11	11,5	12,5	13	1	1,5	2,5	3,5	4	5	6
USA:	8,5	9,5	10	11	12	12,5	13,5	1	2	2,5	3,5	4,5	5	6	7
MP:	160	165	170	175	180	185	190	195	205	210	215	220	225	235	245

Garmont International SRL reserves the right to modify or discontinue,  
without notice, models illustrated in this catalogue.

ALL RIGHTS RESERVED.

This catalogue cannot be reproduced in part or in whole,  
without express authorization from Garmont International SRL.

**Garmont International S.r.l.**  
Via del Lavoro, 18, 31050 Vedelago (TV) Italy  
Tel: +39 0423 8726  
info@garmont.com - www.garmont.com